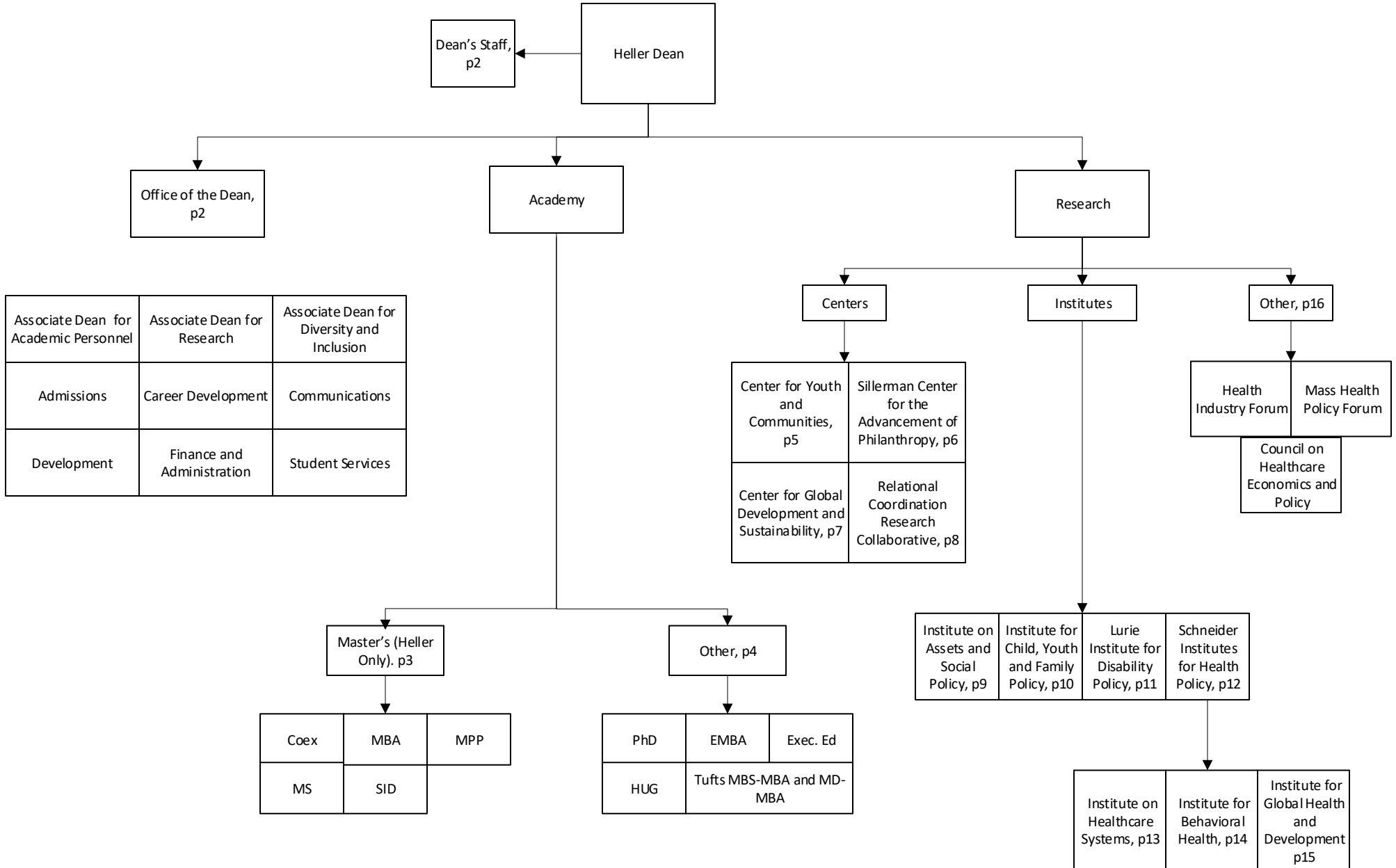
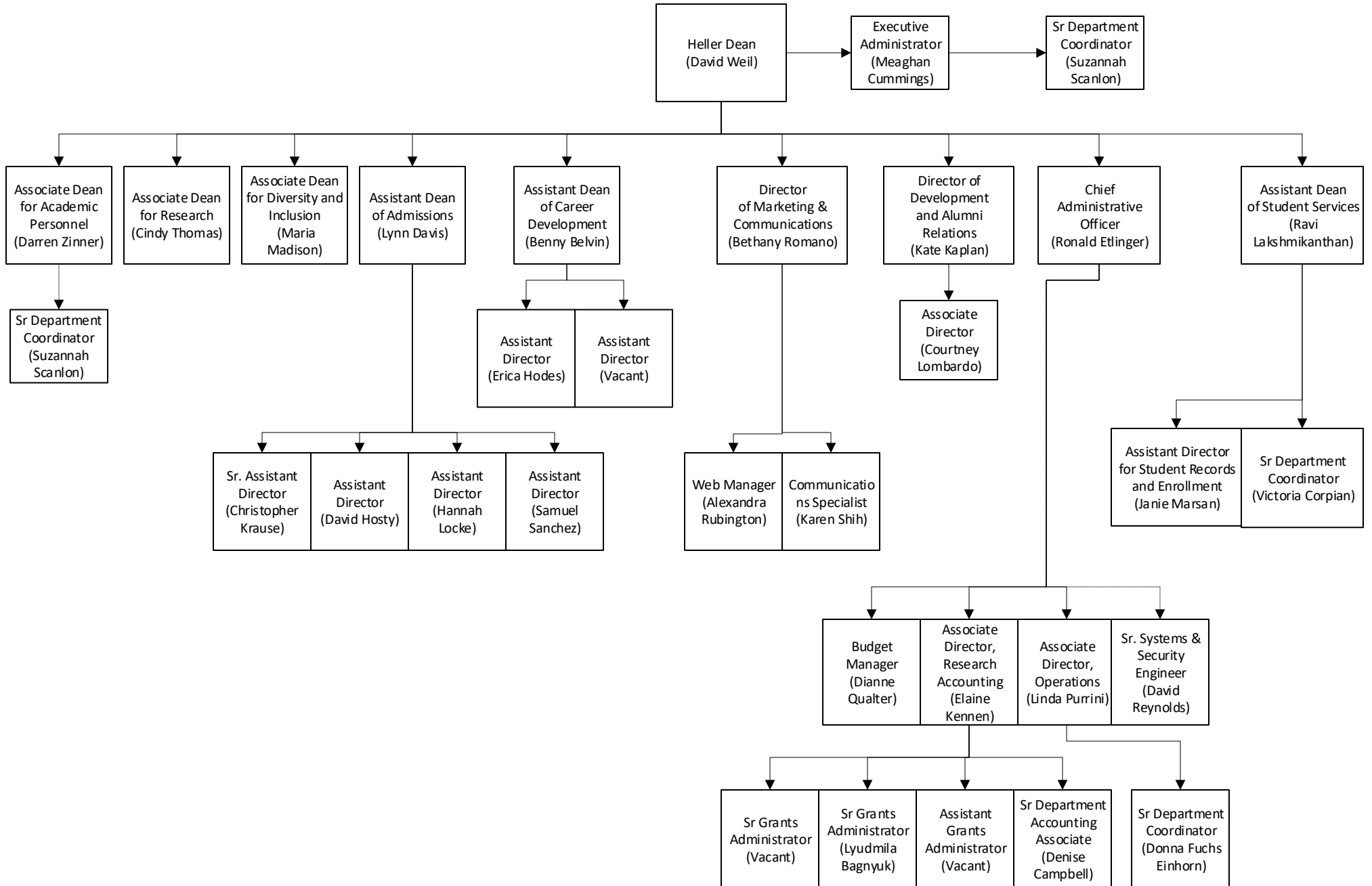


Overview

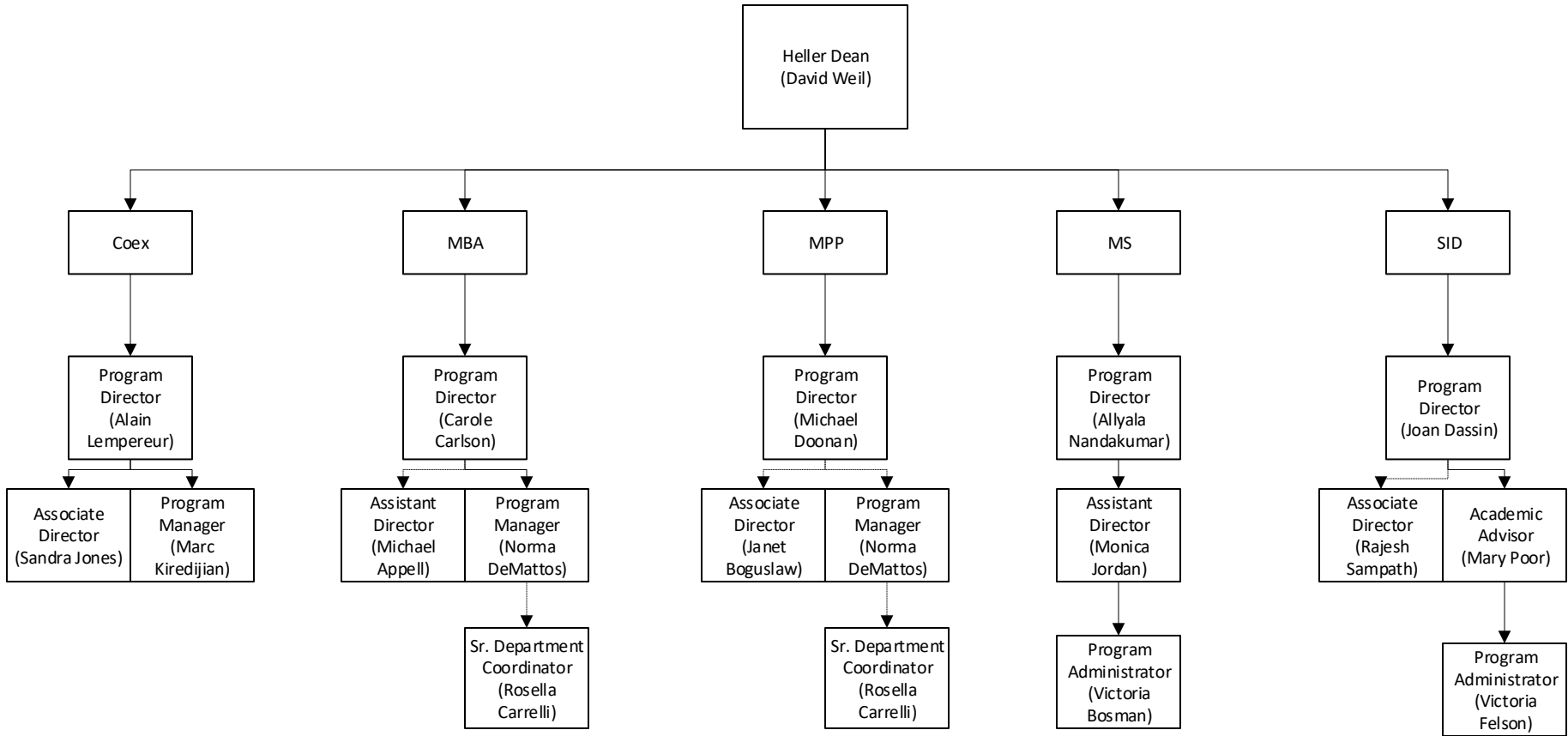


Dashed Indicates that this is not an official reporting line.

Office of the Dean



Academy- Masters (Heller Only)



COEX Core Faculty*

- Mari Fitzduff
- Theodore Johnson

MBA Core Faculty*

- Brenda Anderson
- Lawrence Bailis
- Jon Chilingirian
- Susan Curnan
- Joel Cutcher-Gershenfeld
- Stephen Fournier
- Jody Hoffer Gittell
- Jeffrey Prottas

MPP Core Faculty*

- Christine Bishop
- Mary Brolin
- Susan Curnan
- Stephen Fournier
- Jeffrey Prottas
- Marji Warfield

MS Core Faculty*

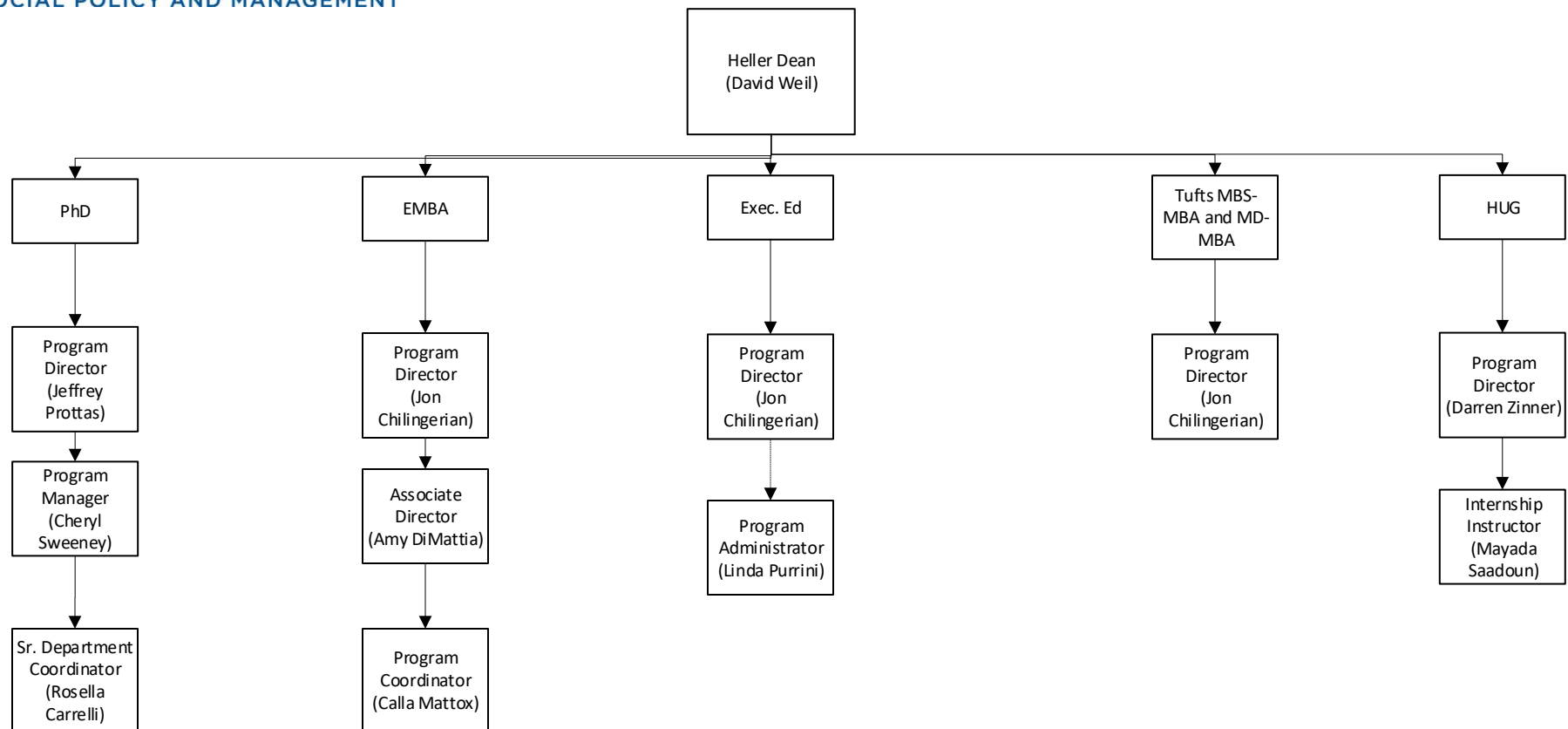
- Diana Bowser
- Stephen Fournier
- A.K. Nandakumar
- Donald Shepard
- Wu Zeng

SID Core Faculty*

- Joseph Assan
- Cristina Espinosa
- Ricardo Godoy
- Eric Olson
- Larry Simon

*Core Faculty do not include external faculty, such as adjuncts, those who teach but are on a research track, such as scientists with lecturer titles, staff who teach, or those who direct or associate direct the program.

Academy- Other



PhD Core Faculty*

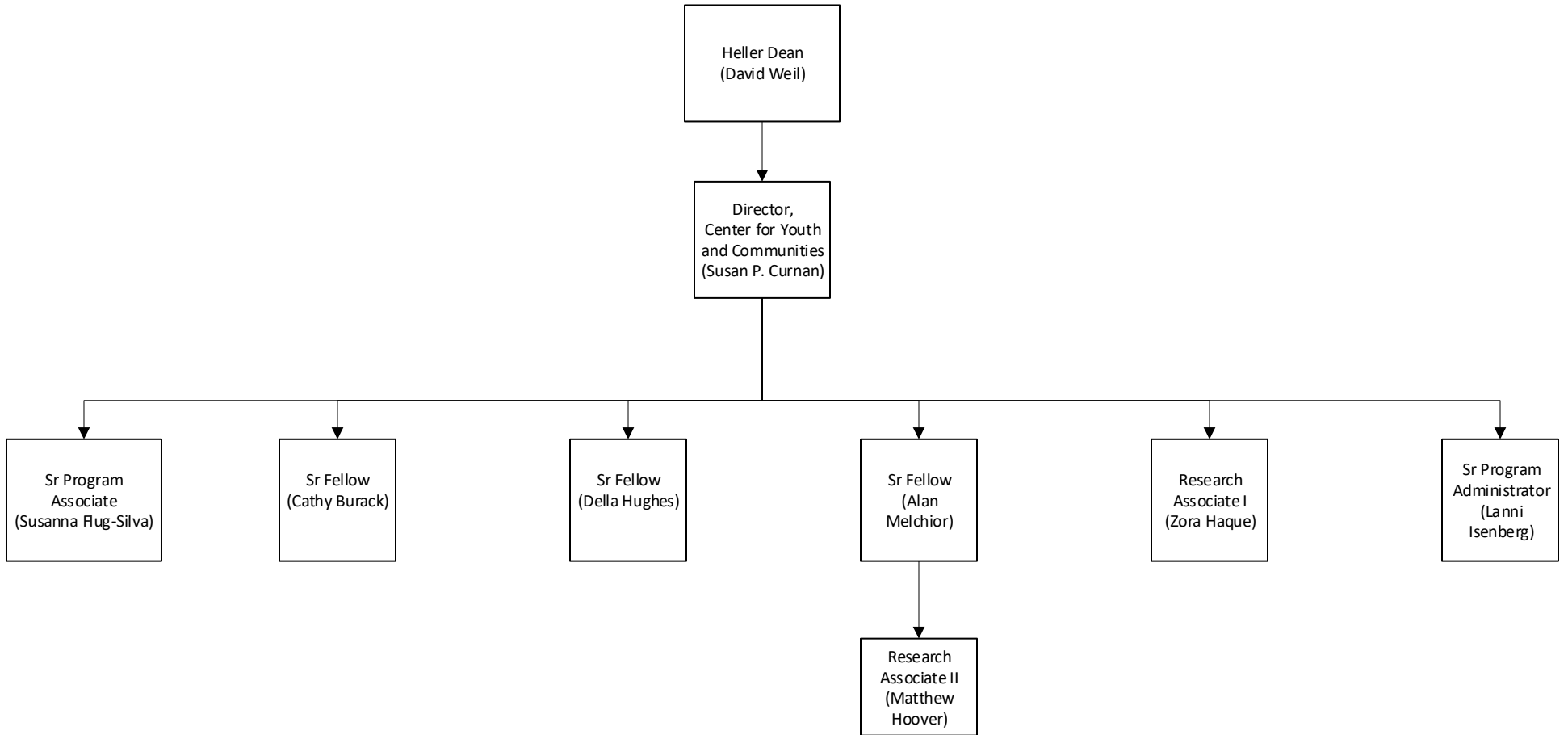
- Dolores Acevedo-Garcia
- Stuart Altman
- Christine Bishop
- Jon Chilingierian
- Stephen Fournier
- Deborah Garnick
- Jody Hoffer Gitttell
- Dominic Hodgkin
- Constance Horgan
- Nina Kammerer
- Monika Mitra
- Grant Ritter
- Len Saxe
- Laurence Simon
- Thomas Shapiro

HUG Core Faculty*

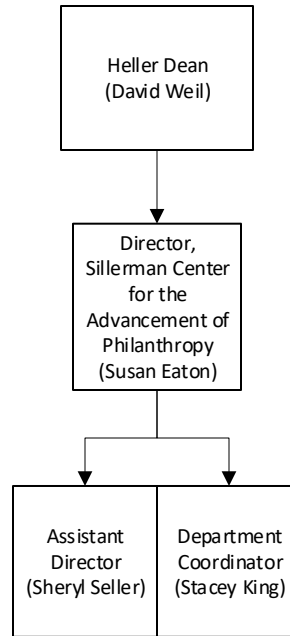
- Dolores Acevedo-Garcia
- Stuart Altman
- Deborah Garnick
- Dominic Hodgkin
- Eric Olson
- Sharon Reif
- Rajesh Sampath
- Thomas Shapiro
- Cindy Thomas

*Core Faculty do not include external faculty, such as adjuncts, those who teach but are on a research track, such as scientists with lecturer titles, staff who teach, or those who direct or associate direct the program.

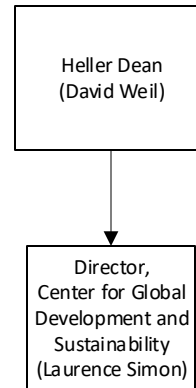
Center for Youth and
Communities



Sillerman Center for the Advancement of
Philanthropy



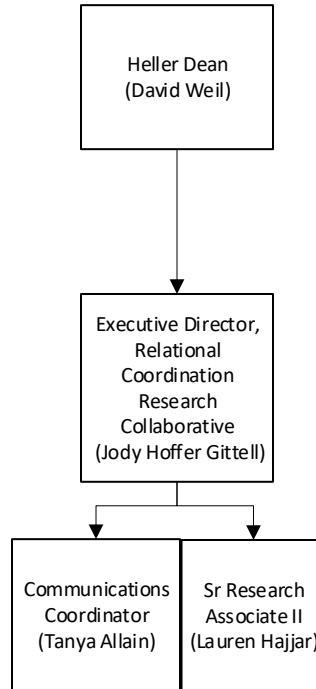
Center for Global Development and Sustainability



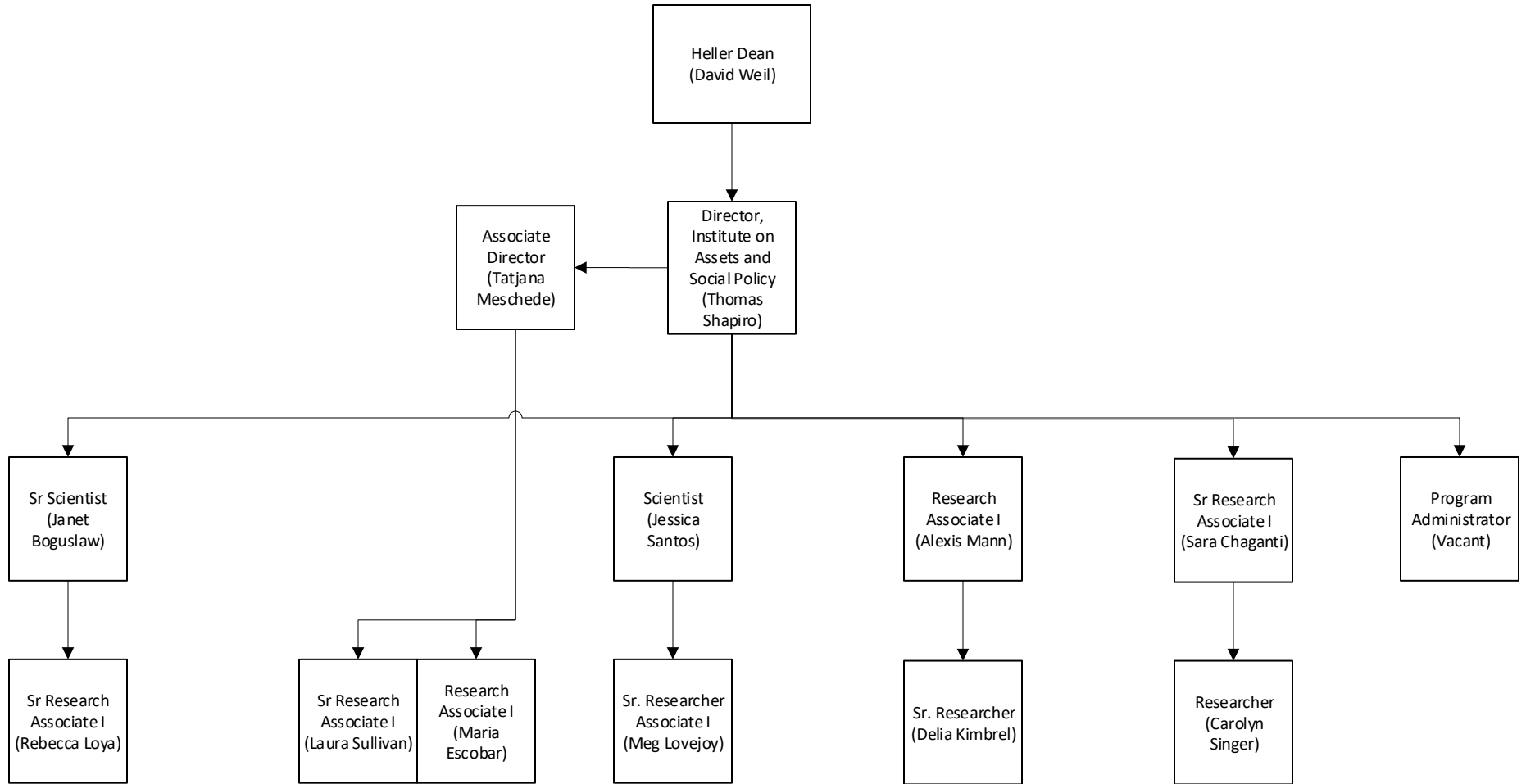
Heller Faculty Associated with this Center

- Joseph Assan
- Joan Dassin
- Cristina Espinosa
- Mari Fitzduff
- Stephen Fournier
- Ricardo Godoy
- Alain Lempereur
- Eric Olson
- Rajesh Sampath
- Donald Shepard

Relational Coordination Research Collaborative



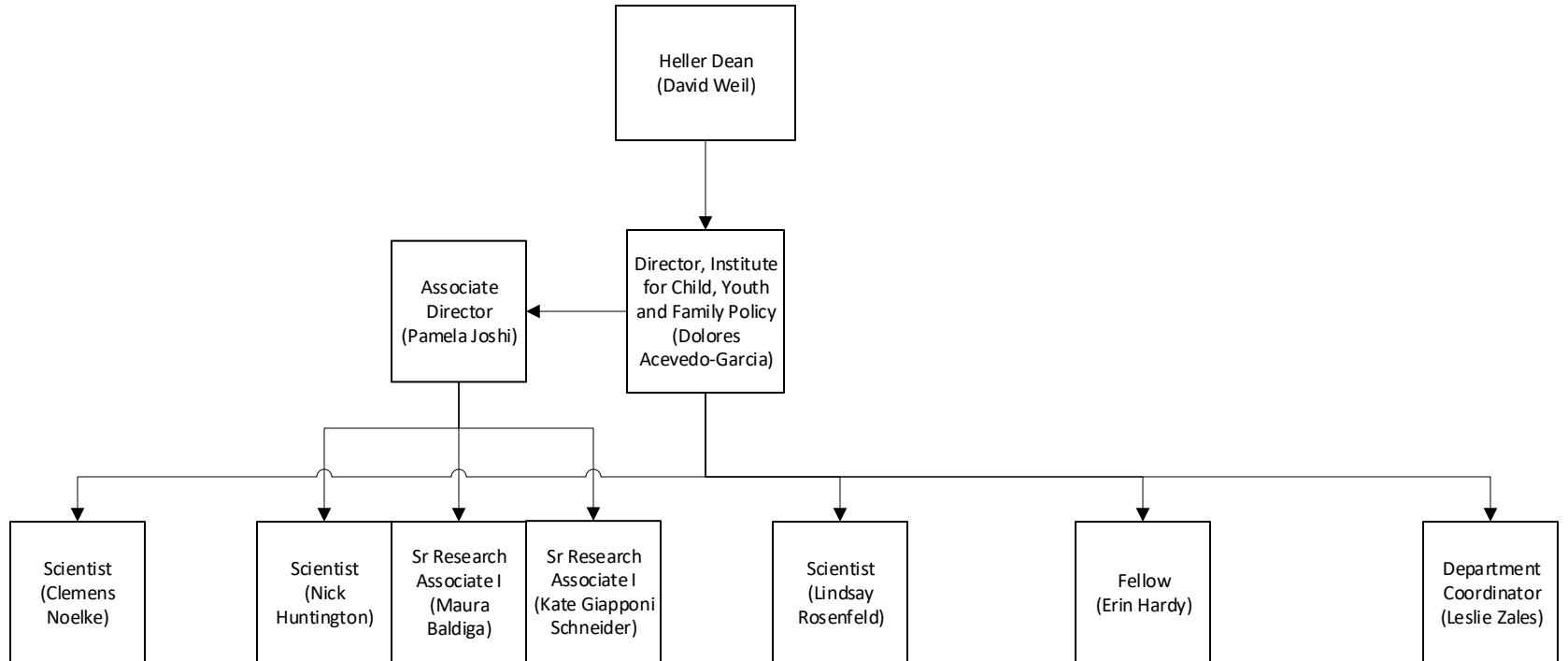
Institute on Assets and Social Policy



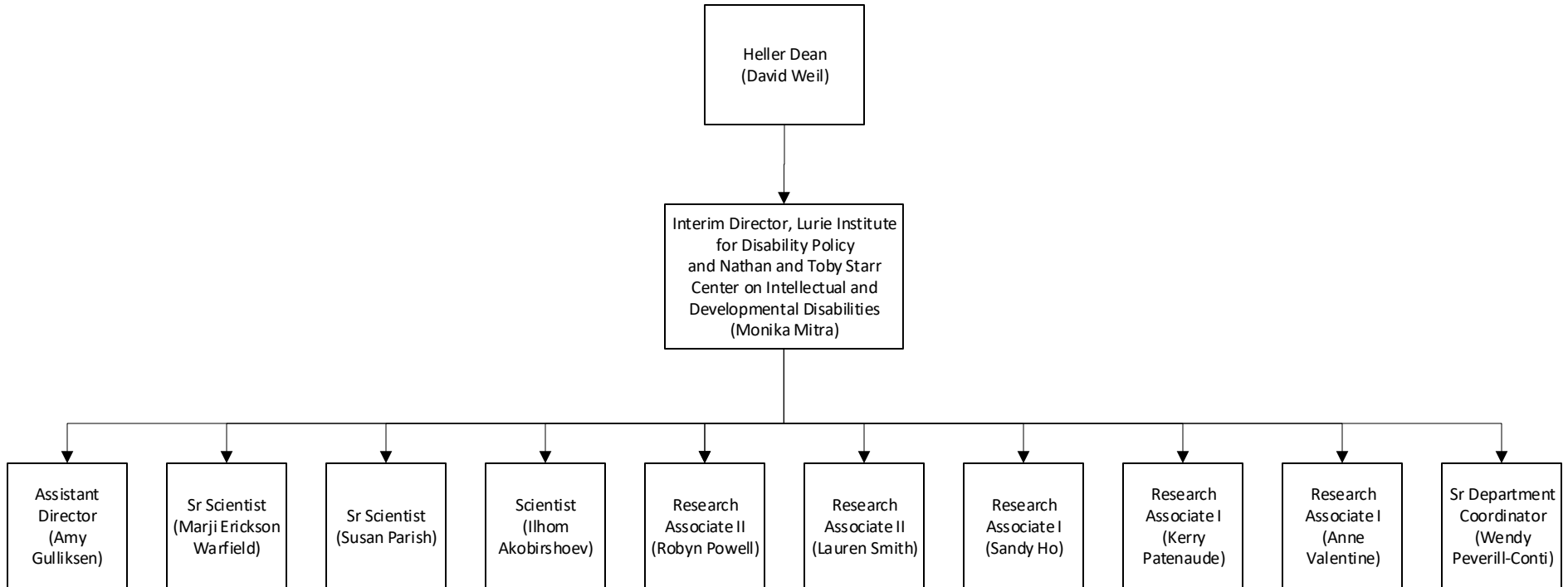
Heller Faculty Associated with this Institute

- Anita Hill
- Jeffrey Prottas

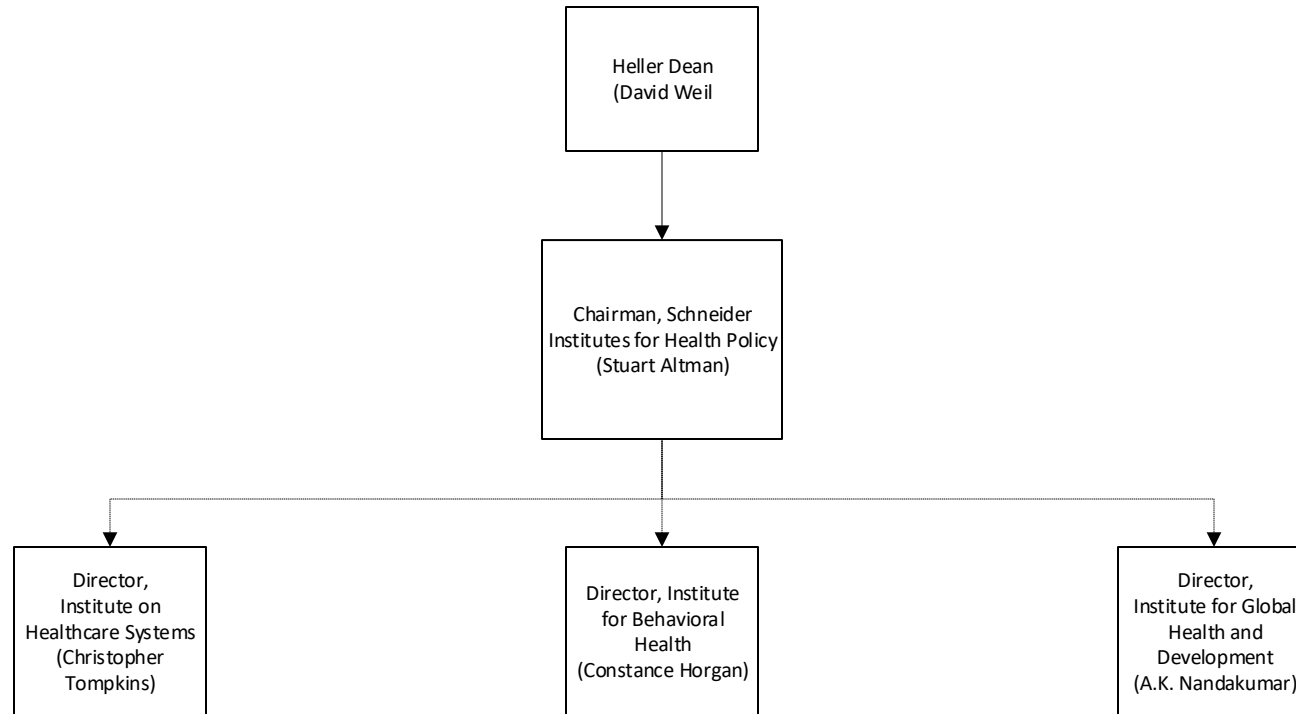
Institute for Child, Youth and Family Policy



Lurie Institute for Disability Policy

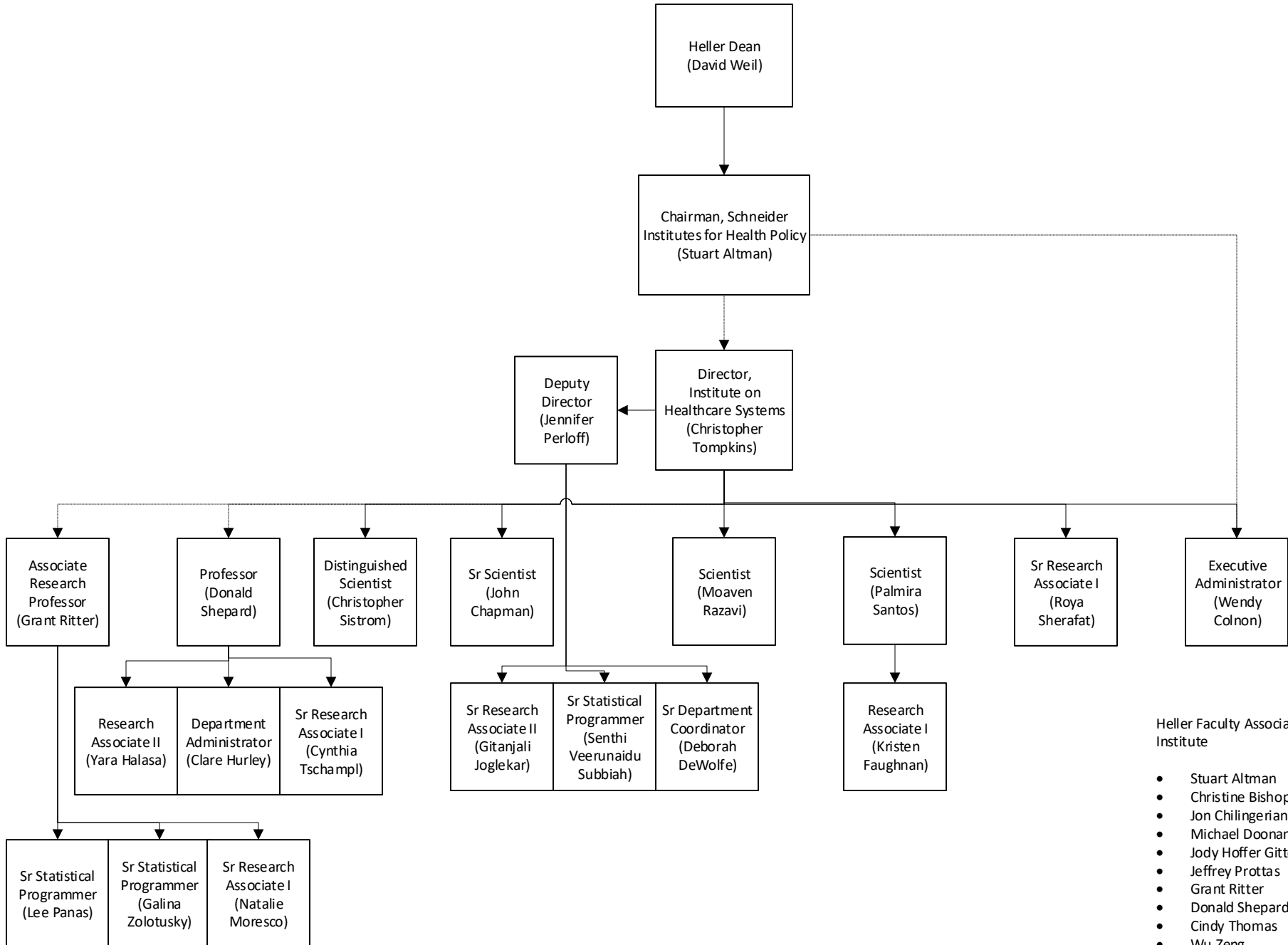


Schneider Institutes for
Health Policy



See next few pages for further breakouts of the institutes.

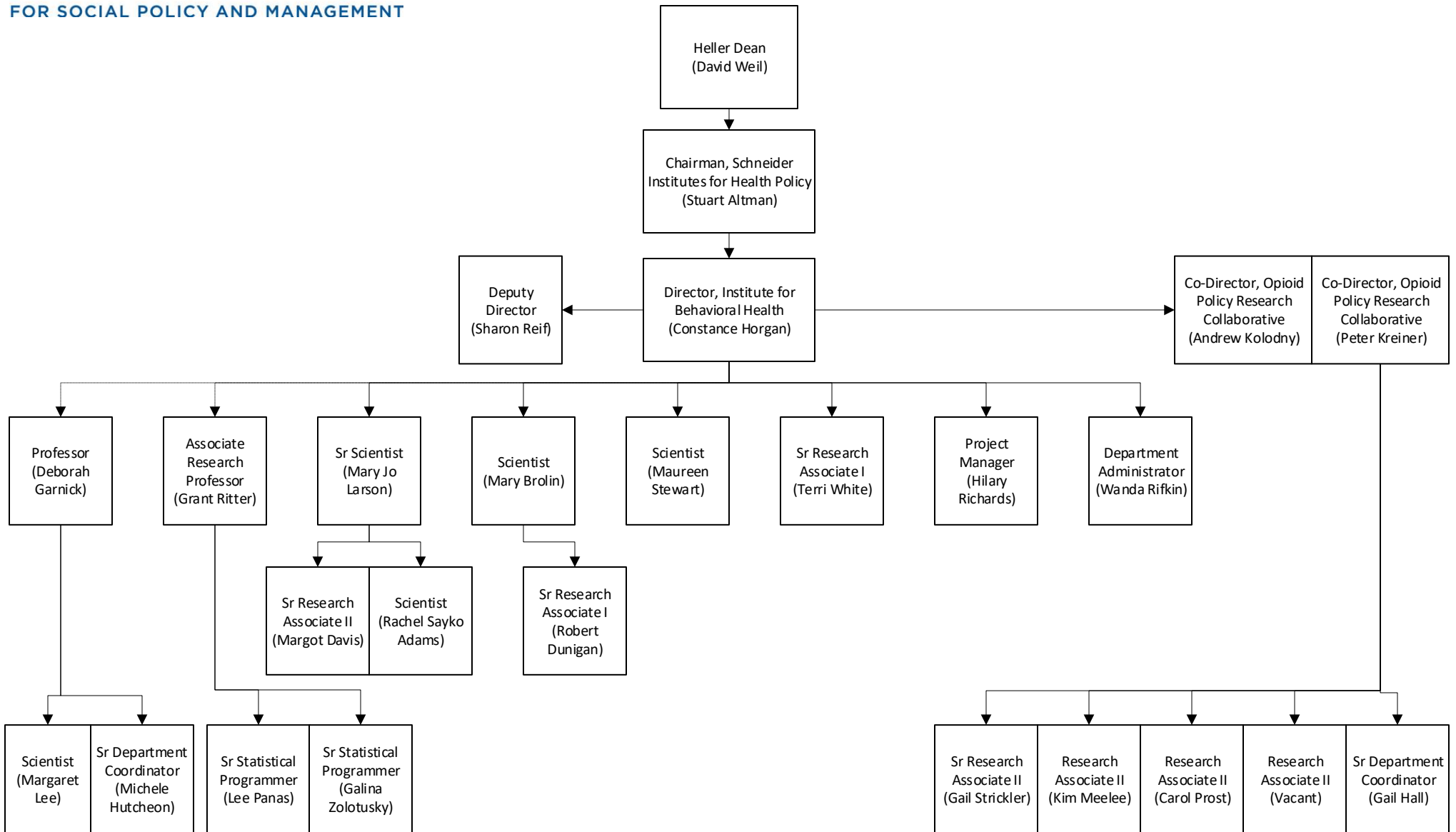
Schneider Institute on
Healthcare Systems



Heller Faculty Associated with this
Institute

- Stuart Altman
- Christine Bishop
- Jon Chilingirian
- Michael Doonan
- Jody Hoffer Gittel
- Jeffrey Prottas
- Grant Ritter
- Donald Shepard
- Cindy Thomas
- Wu Zeng
- Darren Zinner

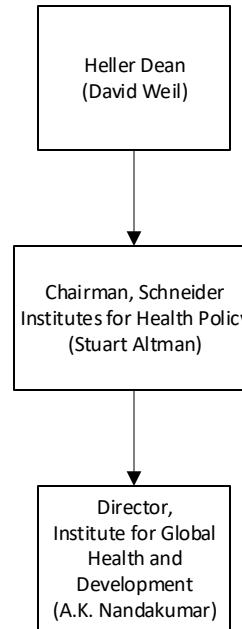
Schneider Institute for Behavioral Health



Heller Faculty Associated with this Institute

- Deborah Garnick
- Constance Horgan
- Dominic Hodgkin
- Grant Ritter

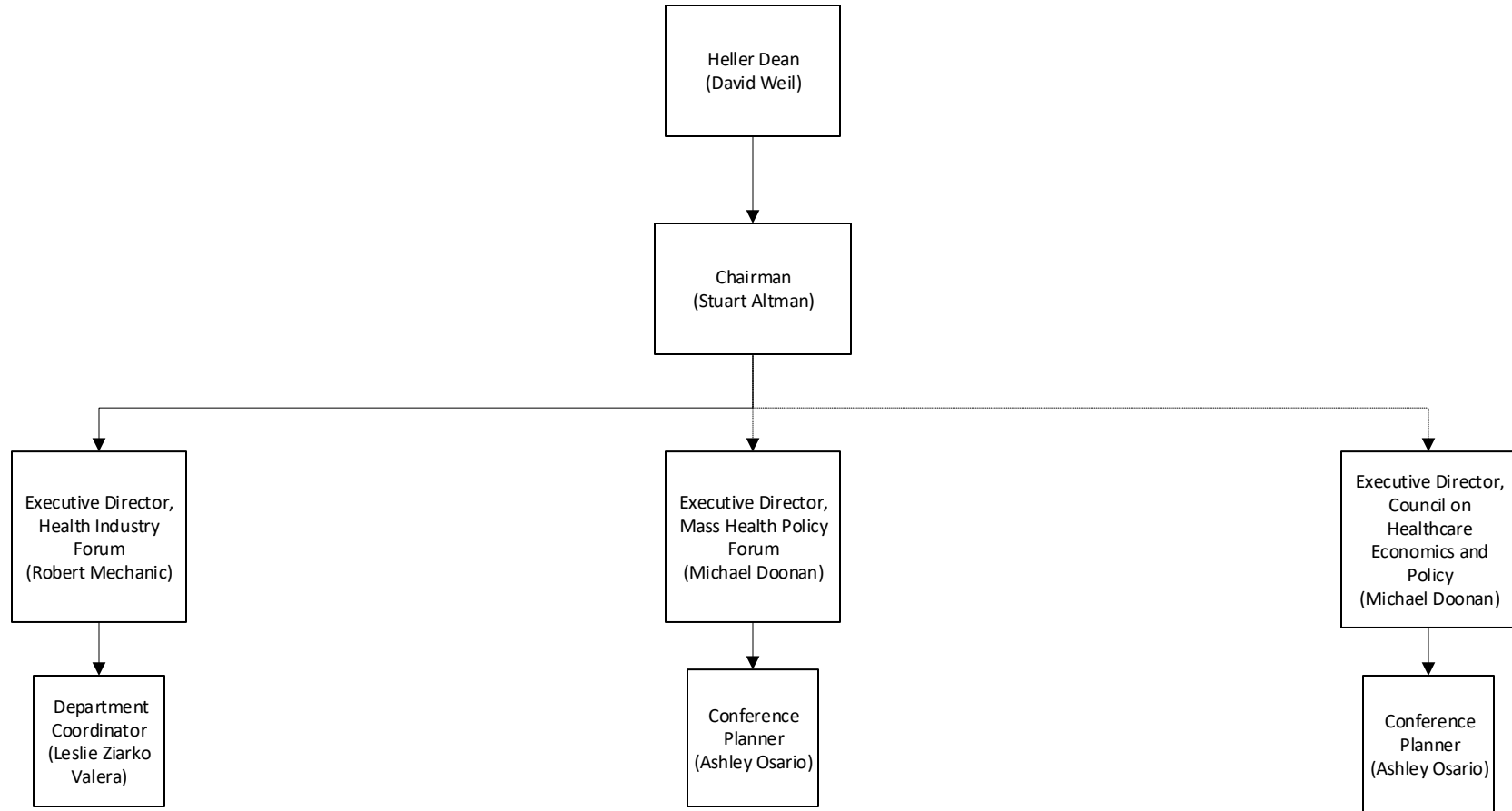
Schneider Institute for
Global Health and
Development



Heller Faculty Associated with this Institute

- Diana Bowser

Other Research



Associated Heller Faculty

- Darren Zinner